

Companion™ User Guide



Table of Contents

Safety Information	2-5
Features	6-7
Using the Restraint	8-17
LATCH Storage	8
Adjustable Canopy	8
Adjustable Handle	9
Harness Buckle	10
Adjusting Buckle Position	10-11
Adjusting Width of Head Pad	12
Chest Clip	12
Checking Harness Height	14
Harness Height Adjustment	15
Securing Child in Restraint	16-17
Vehicle Safety Belts	18
Vehicle Seating Positions	19
Base Installation	20-25
LATCH Installation	20-21
Lap-Shoulder Belt Installation	22-23
Lap Belt Installation	24-25
Recline Adjustment	13
Attaching Restraint to Base	13
Removing Restraint from Base	13
Installation without Base	26-28
Lap-Shoulder Belt Installation	26-27
Lap Belt Installation	28
Installation in Aircraft	29
Care and Maintenance	30-33
Warranty	34

This product and its components are subject to change without notice.

© 2007 Britax Child Safety, Inc. All rights reserved.

Printed in U.S.A. P231400 R5:10.07



WARNING

DEATH or SERIOUS INJURY can occur:

- Use only in a rear facing position when using this restraint in the vehicle. This infant restraint cannot be used forward facing in a vehicle.
- Use only with children who weigh between 4 and 22 pounds (2 and 10 kg) and whose height is 30 inches (76 cm) or less.
- Snugly adjust the belts provided with this restraint around your child. A snug strap should not allow any slack. It lies in a relatively straight line without sagging. It does not press on the child's flesh or push the child's body into an unnatural position.
- An optional Low Birth Weight Foam insert may be used to help obtain a snug fit for infants whose weight is less than 7 pounds (3 kg.). To order optional foam, call Britax at 1-888-4BRITAX.
- Secure this child restraint with the vehicle's child restraint LATCH anchorage system if available or with a vehicle belt.
- Follow all instructions labeled on the child restraint and in these written instructions.
- According to accident statistics, the National Highway Traffic Safety Administration recommends that parents select the rear seat as the safest location for a properly installed child restraint. Please study the sections on Vehicle Safety Belts and Vehicle Seating Positions in this booklet to ensure the child's safety. If in doubt about installing the child restraint, consult the vehicle owner's manual.
- Secure this child restraint even when it is not occupied. In a crash, an unsecured child restraint may injure vehicle occupants.
- Consult your child's doctor before using this child restraint. Some infants must be secured with a device that allows them to lie flat.

- NEVER use a rear-facing infant carrier in a seating position with an air bag. Death or serious injury can occur.
- Never use the adjuster strap to lift or carry this child restraint. Doing so could cause damage to the harness adjuster and webbing. Always carry a child restraint by the handle or shell.
- The primary protection for occupants of a vehicle in a collision is the structure of the vehicle; a child restraint will not protect an infant when the vehicle is seriously impacted. However, correctly installed, a child restraint will substantially improve the chances for survival in most crashes. Make sure that all users fully understand the correct ways to use this child restraint in a vehicle.
- This child restraint must not be used in boats, or other non-certified applications.
- NEVER leave child unattended.
- NEVER place carrier on beds, sofas, or other soft surfaces. Infant carrier can roll over on soft surfaces and suffocate the child.
- NEVER use in or on strollers unless approved by Britax.
- NEVER install forward facing in a vehicle.
- NEVER place carrier near edges of counter tops, tables, or other elevated surfaces. Child's movement can slide carrier.
- NEVER leave child carrier when straps are loose or undone. Child can strangle in loose restraint straps.
- DO NOT use infant carrier in shopping carts.
- Watch your child closely when restraint is not installed in a vehicle to avoid tipping over and strangulation.
- Harness must be used at all times when child is in carrier.

Safety Information

IMPORTANT NOTES

- Your infant carrier has been assembled for children weighing less than 11 lbs. If/When your child weighs 11 lbs. or more, re-route the buckle strap position as indicated on pages 10-11 and on the label affixed to the restraint shell.
- Adjust harness to fit clothes the child is wearing. Remove bulky coats and/or jackets before putting child in restraint.
- Because of the side impact crash protection it provides, Britax strongly recommends the infant carrier be used with the head pad.
- Verify that the child restraint is secure and that the harness is properly adjusted around the child each time the child restraint is used.
- Cover the restraint when the vehicle is parked in direct sunlight. Parts of the child restraint could become hot enough to burn the child.
- Store the child restraint in a safe place when it is not being used for an extended period of time. Do not place heavy objects on top of it.
- Stop use of a child restraint that is older than six years or has been in a severe crash to prevent injury due to deterioration or hidden damage.
- Do not leave children alone in a vehicle, even for a short time.
- Do not, except as described in this booklet, attempt to disassemble any part of the child restraint or change the way its harness or the vehicle belts are used.
- Do not leave loose objects, e.g. books, bags, etc., in the back of a vehicle. In the event of a sudden stop, loose objects will keep moving, potentially causing serious injuries.
- Do not leave folding vehicle seats unlatched. In the event of a sudden stop, a loose seat back could prevent the child restraint from protecting the child as well as it should.
- Do not allow children to play with the child restraint.
- Do not hang accessories or toys from handle. Doing so could create a hazard for the child.

Safety Information

This child restraint system conforms to all applicable Federal motor vehicle safety standards. **This restraint is certified for use in motor vehicles and aircraft.**

Fill out the registration card and mail it in today!

Child restraints could be recalled for safety reasons. You must register this restraint to be reached in a recall. Send your name, address, email address if available, and the restraint's model number and manufacturing date to Britax Child Safety, Inc. 13501 South Ridge Drive Charlotte, NC 28273 or call 1-888-4BRITAX or register online at www.BritaxUSA.com/registration. For recall information, call the U.S. Government's Vehicle Safety Hotline at 1-888-327-4236 (TTY: 1-800-424-9153) or go to <http://www.NHTSA.gov>.



WARNING! DO NOT place a child restraint rear-facing in the front seat of a vehicle with a passenger air bag. DEATH or SERIOUS INJURY can occur. The back seat is the safest place for children 12 and under.

Features



1. Canopy
2. Handle
3. Head Pad
4. Handle Release Button
5. Harness Slots
6. Comfort Pads
7. Chest Clip
8. Harness

9. Buckle
10. Belly Pad
11. Perma-Book™ (under cover)
12. Harness Adjuster Lever (under button hole slot)
13. Harness Adjuster Strap
14. Restraint Belt Guides



- 15. Release Handle
- 16. Base Belt Guides
- 17. Lock-off
- 18. Anti Rebound Bar
- 19. Attachment Clips
- 20. Recline Adjustment Knob
- 21. Harness Yoke
- 22. LATCH Connector Storage Ring

- 23. LATCH Connector
- 24. LATCH Harness Adjuster
- 25. Serial Number

Using the Restraint

LATCH Storage

Removal:

Press button on LATCH connector to release from storage ring.

Attachment:

Attach each LATCH connector to storage ring on front of base, then remove slack (Fig. A).

Adjustable Canopy

To raise, pull canopy at top of canopy arch toward foot of restraint. To collapse, push canopy at top of canopy arch (Fig. B).



Adjustable Handle

To adjust, press both handle release buttons (Fig. C) while rotating handle into position. Adjust the handle to one of the following three positions: Carrying & In-Stroller Position, Optional In-Stroller Position, or In-Vehicle & Stationary Position (Fig D).



**Carrying & In-Stroller
Position**



**Optional In-Stroller
Position**



**In-Vehicle & Stationary
Position**

Using the Restraint

Harness Buckle

To Unfasten Buckle (Fig A):

- Brace the rear of the buckle with hand.
- Use thumb to press release button until tongues are ejected from buckle.

To Fasten Buckle (Fig B):

- Hold the buckle with one hand.
- Use the other hand to insert one tongue at a time into the buckle. Proper connection is confirmed with a positive click after inserting the second buckle tongue.

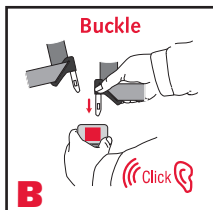
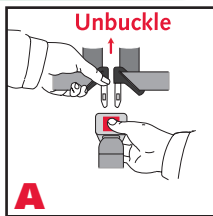
IMPORTANT: Periodically clean the buckle to ensure proper operation. See section, Cleaning the Buckle, on page 33.

Re-Routing Buckle Position

Your infant carrier has been assembled with the buckle strap in the inner position for infants weighing less than 11 lbs. (5 kg.). Once your child reaches 11 lbs. (5 kg.) re-route the buckle position to the outer position for the remainder of use with that child. Figure C shows both harness buckle position slots.

Remove Buckle

1. With restraint removed from the base, pull seat cover and foam back so the buckle slots are visible.



2. Locate metal retainer attached to the opposite end of the buckle strap from the buckle on the top side of the restraint.
3. Pull retainer up to loosen (Fig D).
4. Turn the retainer so that the short side will go down through the slot in the restraint shell to the bottom side of the restraint (Fig. E).
5. From the bottom of the restraint, turn the retainer so the short side will go up through the slot in the restraint shell to the top side of the restraint (Fig. F).
6. Continue to push retainer back through the slot in the cover.



Replace Buckle

7. Turn the retainer so that the short side will go down through the desired cover slot and the slot in the restraint shell to the bottom side of the restraint (Fig. G).
8. From the back side of the restraint, turn retainer so that the short side will go up through the other slot in the restraint shell (do not insert through cover) to the top side of the restraint.
9. Pull buckle away from restraint until tight, then verify that the strap is not twisted and the release button is facing outward (Fig H).
10. Replace cover.



Using the Restraint

Adjusting Width of Head Pad

Your head pad features optional width adjustment, use the following steps to adjust the head pad.

Note: Because of the side impact crash protection it provides, Britax recommends the infant carrier be used with the head pad.

To inflate:

Squeeze top center of head pad to inflate sides to desired width (Fig A).



To deflate:

Press release valve, indicated with label on head pad, to deflate head pad to desired width.



Chest Clip

Securing the Chest Clip

Secure the chest clip by sliding the harness into the slot on the right side of the chest clip (Fig B).

IMPORTANT: The correct height for the chest clip is at the center of the chest, level with the armpits (Fig. C).

Releasing the Chest Clip

Release the chest clip by sliding the harness out of the slot on the right side of the chest clip.



Recline Adjustment

To adjust recline, release tension of LATCH or vehicle belt then turn knob on front of base until desired angle is achieved (Fig. D).

- *When correctly reclined, the red line on base will be parallel to level ground.*
- *If there is a problem stabilizing the base, place a rolled towel in the crease of the vehicle seat to help level the base.*



WARNING! Only raise base as described above. Do not raise the base off of the front edge of vehicle seat; doing so will reduce the protection for your child.

Attaching Restraint to Base

To install, align restraint rear facing with slots in base, then push down until it clicks into base (Fig. E). Pull up from child restraint handle to be sure it is properly secured. Rotate handle to “in vehicle position”.



WARNING! Never attach restraint to base unless the base is secured in a vehicle as described on pages 20-25.



Removing Restraint from Base

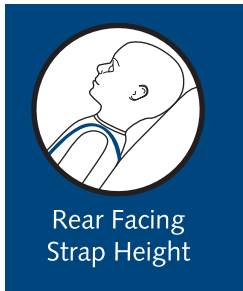
To remove child restraint from base, squeeze and hold release handle on the rear of the restraint, then lift restraint by handle (Fig. F).

Using the Restraint

Checking Harness Height

To Check Harness Height:

1. Place child in restraint, then secure harness (see pages 24–25).
2. After first ensuring the buckle position is correct (see page 10), observe where the harness is positioned on the child.
 - *Harness straps should be located in the nearest slot at or below the child's shoulder*
3. If harness height is correct, continue using child restraint without adjustment. If harness height requires adjustment, refer to Harness Height Adjustment on page 15.



Weight Range

Rear Facing ONLY
4–22 lbs. (2–10 kg)

Maximum Height

The child is too tall when the top of the head is less than one inch from top of restraint or height exceeds 30 inches (76 cm).

Harness Height Adjustment

1. Loosen the harness by pressing the harness adjuster lever while pulling the harness straps forward as far as possible (Fig. A).
2. From the rear of the restraint, unhook the harness straps from the yoke (Fig. B).
3. Pull straps through the shell, cover, and head pad.
4. Thread straps through proper slots in head pad.
 - Use bottom slots in head pad when using with bottom slots in shell. Use top slots in head pad when using with middle or top slots in shell.
5. Thread the harness straps through slots in shell, at the new height, toward the bottom of the restraint (Fig. C).
6. Reattach harness straps to the yoke (Fig. B).
7. Pull harness adjuster strap to tighten the harness.
8. Verify that all straps are threaded at the same height and are not twisted.



Using the Restraint

Securing Child in Restraint

1. Loosen the harness by pressing the harness adjuster lever while pulling the harness straps forward (Fig. A).
2. Slide the harness strap out of one side of chest clip to release (Fig. B).
3. Unfasten the buckle by pressing down on the release button (Fig C).
4. Move the harness straps to the sides of the restraint.
5. Place child in the restraint.
6. Position the harness straps around the child and fasten the child restraint buckle (Fig D) and secure chest clip (Fig E).
 - *Proper connection of the buckle is confirmed with a positive click after inserting the second buckle tongue.*
7. Gently pull up on the harness straps to tighten the lap section of the harness, which should fit low on the child's body.



8. Slowly pull the adjuster strap to tighten the harness around the child (Fig. F).
 - *Snugly adjust the belts provided with this child restraint around your child. A snug strap should not allow any slack. It lies in a relatively straight line without sagging. It does not press on the child's flesh or push the child's body into an unnatural position.*
9. Position the chest clip at the center of the child's chest, level with the child's armpits.
10. Verify that harness is not twisted and child is properly secured.
11. Make sure that harness height and buckle position is correct. Refer to Checking Harness Height on page 14 for instructions.

IMPORTANT:

- *Always pull on the harness after securing the child to make sure the buckle and harness are locked. If not, the buckle or adjuster area may be clogged with food, drink, or objects that need to be removed. See pages 31 and 33 for cleaning instructions.*
- *Always make sure that the harness is tight before each use, or after any adjustments.*



Vehicle Safety Belts

Vehicle Safety Belts

NOTE: The information in this section applies only to installation with vehicle belts.

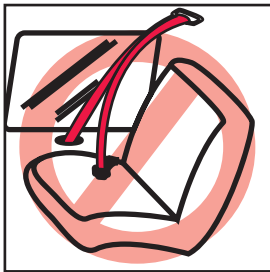
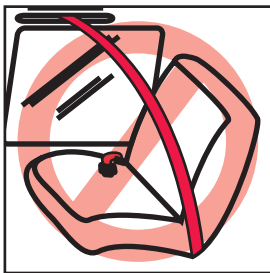
IMPORTANT: Some vehicles have no seating positions which are compatible with this child restraint, or any other child restraint. If in doubt, contact the vehicle manufacturer for assistance.

The following types of vehicle belts are not compatible with this child restraint:

- ✗ Front vehicle belts with top or bottom anchorage points in the door.
- ✗ Motor driven automatic vehicle belts.
- ✗ Three-point belts that have separate retractors for the shoulder section and the lap section.
- ✗ 2-point Emergency Locking Retractor (ELR) vehicle belts with use of base.
- ✗ 2-point Emergency Locking Retractor (ELR) vehicle belts without the use of a belt shortening clip when installing without base.

The owner's manual for your vehicle will have information on the types of vehicle belts in your vehicle. If your belt type is listed above, select another seating position or use LATCH connectors.

This child restraint can fit securely in most vehicles using the existing vehicle belts. However, some vehicle designs prevent a secure fit of the child restraint due to the position of the vehicle belt lower anchorage points.

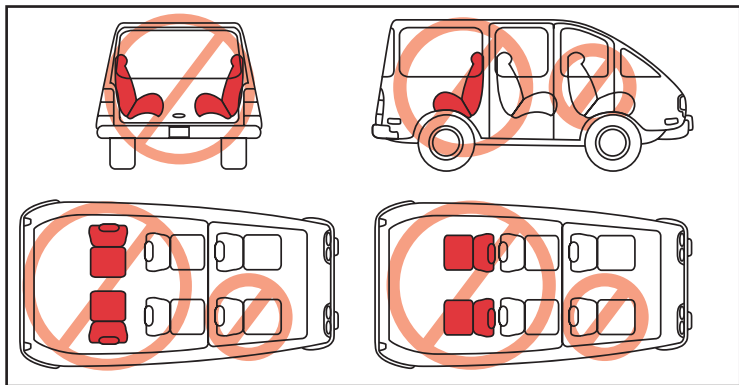


Vehicle Seating Positions



WARNING!

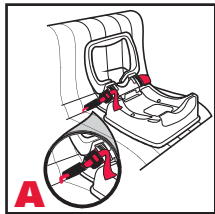
- Forward facing vehicle seats **MUST** be used with this child restraint. Side facing or rear facing seats **CANNOT** be used.
- **DO NOT** place a child restraint rear-facing in the front seat of a vehicle with a passenger air bag unless the air bag is turned off. **DEATH** or **SERIOUS INJURY** can occur. The back seat is the safest place for children under 12.



Base Installation

LATCH Installation

- *Figure A illustrates a typical rear facing LATCH installation.*
 - *Verify that your vehicle is equipped with LATCH anchors. If LATCH anchors are not installed, you must use vehicle belt installation methods.*
1. Disconnect LATCH connectors from storage ring on the front of the base.
 2. Press and hold the LATCH adjuster release button, then pull to lengthen LATCH harness to full length.
 3. Open lock-off by lifting both tabs, then opening lock-off plate (Fig. B).
 4. Place the base sideways on the vehicle seat, with the anti-rebound bar facing you.
 5. Verify that the LATCH harness is not twisted, then attach the closest connector to the seatback to the farthest LATCH anchor in desired seating position (Fig. C).
 - *A positive click confirms attachment.*
 6. Rotate base into rear facing position with anti-rebound bar against vehicle seat back.
 7. Verify that the LATCH harness is not twisted, then attach the other connector to closest LATCH anchor in desired seating position (Fig. D).
 - *A positive click confirms attachment.*
 8. Adjust recline by turning knob on front of base until correct angle is achieved.
 - *When correctly reclined, the red line on base will be level with the ground.*



- If there is a problem achieving the proper recline angle, collapse the recline adjuster and place a rolled towel or pool noodle in the crease of the vehicle seat to help level the base.



WARNING! Only raise base as described above. Do not raise the base off of the front edge of vehicle seat; doing so will reduce protection of your child.

9. Push the base firmly into the vehicle seat while pulling each LATCH harness tight (Fig. E).
10. Close lock-off plate over the LATCH harness, then secure by closing both tabs while pressing firmly on the lock-off plate (Fig. F).
 - Lock-off is properly secured when tabs are flat against lock-off plate.
11. Check recline angle. If adjustment is necessary, release tension on LATCH straps and adjust angle, then re-tighten.
12. Verify that all connections are secure and the base is stable. Base is stable when it moves less than 1 inch front to back or side to side.



Base Removal:

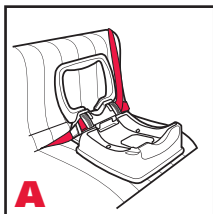
Loosen the LATCH straps, then release each LATCH connector from the LATCH anchor by pressing the release button on the LATCH connector.

- When not in use, always store the LATCH connectors on storage ring at front of base.

Base Installation

Lap-Shoulder Belt Installation

- *Figure A illustrates a typical rear facing lap-shoulder belt installation.*
 - *If attached, remove restraint before installing base.*
 - *When not in use, always store the LATCH connectors on storage ring at front of base.*
1. Place the base in a rear-facing position on the vehicle seat with the anti-rebound bar against the vehicle seat back.
 2. Open lock-off by lifting both tabs, then open lock-off plate (Fig. B).
 3. Extend vehicle belt.
 4. With shoulder and lap portion of vehicle seat belt together, route under both belt guides (Fig. C).
 5. Verify that the vehicle belt is not twisted, then buckle (Fig. D).
 6. Adjust recline by turning knob on front of base until correct angle is achieved.
 - *When correctly reclined, the red line on base will be level with the ground.*
 - *If there is a problem achieving the proper recline angle, collapse the recline adjuster and place a rolled towel or pool noodle in the crease of the vehicle seat to help level the base.*



WARNING! Only raise base as described above. Do not raise the base off of the front edge of vehicle seat; doing so will reduce protection of your child.

7. Push the base firmly into the seat while removing slack from the lap portion of the vehicle belt, then the shoulder portion (Fig. E).
8. Route the shoulder belt webbing under seat belt guides along top of tightened lap belt.
9. Close lock-off plate over the vehicle belt, then secure by closing both tabs while pressing firmly on the lock-off plate (Fig. F).
 - *Lock-off is properly secured when tabs are flat against lock-off plate.*
10. Check recline angle. If adjustment is necessary, remove seat belt, adjust recline angle, repeat entire process from step 3.
11. Verify that vehicle belt is tight and that the base is stable. Base is stable when it moves less than 1 inch front to back or side to side.



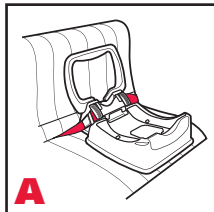
Base Removal:

Remove child restraint from base, open lock-off, unbuckle vehicle belt and remove vehicle belt from belt guides.

Base Installation

Lap Belt Installation

- *Figure A illustrates a typical rear facing lap belt installation with the restraint attached.*
- *If attached, remove restraint before installing base.*
- *When not in use, always store the LATCH connectors on storage ring at front of base.*



WARNING! Do not install this restraint using an Emergency Locking retractor (ELR) vehicle belt.

1. Place the base in a rear facing position on the vehicle seat.
2. Open lock-off by lifting both tabs, then opening lock-off plate (Fig. B).
3. Pull to fully extend vehicle belt.
4. Route vehicle belt under both belt guides (Fig. C).
5. Verify that the vehicle belt is not twisted, then buckle.
6. Adjust recline by turning knob on front of base until correct angle is achieved.
 - *When correctly reclined, the red line on base will be level with the ground.*
 - *If there is a problem achieving the proper recline angle, collapse the recline adjuster and place a rolled towel or pool noodle in the crease of the vehicle seat to help level the base.*





WARNING! Only raise base as described. Do not raise the base off of the front edge of vehicle seat; doing so will reduce protection of your child.

7. Push the base firmly into the seat while removing slack from the vehicle belt (Fig. D).
8. Close lock-off plate over the vehicle belt, then secure by closing both tabs while pressing firmly on the lock-off plate.
 - *Lock-off is properly secured when tabs are flat against lock-off plate.*
9. Check recline angle. If adjustment is necessary, remove seat belt, adjust recline angle, repeat entire process from step 3.
10. Verify that vehicle belt is tight and that the base is stable. Base is stable when it moves less than 1 inch front to back or side to side.



Base Removal:

Remove child restraint from base, open lock-off, unbuckle vehicle belt and remove vehicle belt from belt guides.

Installation Without Base

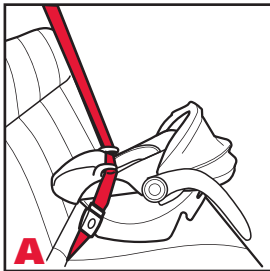
Lap-Shoulder Belt Installation

- *Figure A illustrates a typical rear facing lap-shoulder belt installation of restraint only.*
- *Check your vehicle owner's manual to determine how you can lock your vehicle belt system as instructed by your vehicle operator's manual.*



WARNING! Do not install this restraint using an Emergency Locking retractor (ELR) vehicle belt, unless a locking clip is used. Refer to the vehicle owner's manual for instructions on correct use of vehicle belts with child restraints.

1. Place the restraint rear-facing on the vehicle seat.
2. Extend vehicle belt.
3. With shoulder and lap portion of vehicle seat belt together, route under both belt guides (Fig. B).



Installation Without Base

- Verify that the vehicle belt is not twisted, then buckle (Fig. C).
 - When correctly reclined, the red line on restraint will be level with the ground.
 - If there is a problem achieving the proper recline angle, collapse the recline adjuster and place a rolled towel or pool noodle in the crease of the vehicle seat to help level the base.



WARNING! Only raise base as described above. Do not raise the base off of the front edge of vehicle seat; doing so will reduce protection of your child.

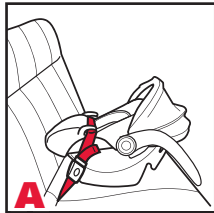
- Push the restraint firmly into the vehicle seat while removing slack from the lap portion of the vehicle belt, then the shoulder portion (Fig. D).
- Lock your vehicle seat belt system as instructed by your vehicle owner's manual.
- Adjust handle to In-Vehicle position.
- Verify that vehicle belt is tight and that the restraint is stable. Restraint is stable when it moves less than 1 inch front to back or side to side.



Installation Without Base

Lap Belt Installation

- *Figure A illustrates a typical rear facing lap belt installation of restraint only.*
- *Check your vehicle owner's manual to determine how you can lock your vehicle belt system as instructed by your vehicle operator's manual.*



WARNING! Do not install this restraint using an Emergency Locking retractor (ELR) vehicle belt, unless a belt shortening clip is used. Refer to the vehicle owner's manual for instructions on correct use of vehicle belts with child restraints.

1. Place the restraint rear-facing on the vehicle seat.
2. Extend vehicle belt.
3. Route vehicle belt under both belt guides.
4. Verify that the vehicle belt is not twisted, then buckle.
 - *When correctly reclined, the red line on restraint will be level with the ground.*
 - *If there is a problem achieving the proper recline angle, collapse the recline adjuster and place a rolled towel or pool noodle in the crease of the vehicle seat to help level the base.*



WARNING! Only raise base as described above. Do not raise the base off of the front edge of vehicle seat; doing so will reduce protection of your child.

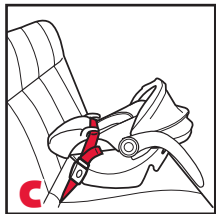
5. Push the restraint firmly into the vehicle seat while removing slack from the vehicle belt.

- Lock your vehicle seat belt system as instructed by your vehicle owner's manual.
- Adjust handle to In-Vehicle position.
- Verify that vehicle belt is tight and that the restraint is stable. Restraint is stable when it moves less than 1 inch front to back or side to side.

Installation in Aircraft

This child restraint is certified for use in aircraft. Most airlines in the U.S. and Canada will allow the use of a child restraint, if it is labeled as an approved child restraint for airline use and fits properly on the plane. Contact the airline about their policy prior to traveling.

- Place the restraint next to a window to avoid blocking the aisle.
- If the aircraft lap belt is too short, ask the flight attendant for a Belt Extender.



To Install in Aircraft:

- Place the restraint, without base, rear facing on the aircraft seat.
- Fully extend aircraft lap belt.
- Route aircraft belt under each belt guide.
- Verify that the seat belt is not twisted, then buckle.
- Push the restraint firmly into the seat while removing slack from the seat belt.
- Verify that vehicle belt is tight and that the restraint is stable. Restraint is stable when it moves less than 1 inch front to back or side to side.

Care and Maintenance

Cover & Head Pad

Removal for Cleaning:

1. Unhook cover attachment clips.
2. Loosen the harness by pressing the adjuster lever located in the front of the restraint, while pulling the harness straps forward as far as possible.
3. Unhook the harness straps from the yoke on the bottom of restraint.
4. Pull upper harness straps through the shell, cover, and head pad to the top of the restraint.
5. Remove head pad.
 - *If only removing head pad for cleaning, end procedure here. Replace head pad by reversing steps above.*
6. Remove buckle strap (also see pages 10-11).
 - a. *With restraint removed from the base, pull cover and foam back so the buckle slots are visible.*
 - b. *Locate metal retainer attached to the opposite end of the buckle strap from the buckle on the top side of the restraint.*
 - c. *Pull retainer up to loosen.*
 - d. *Turn the retainer so that the short side will go down through the slot in the restraint shell to the bottom side of the restraint.*
 - e. *From the bottom of the restraint, turn the retainer so the short side will go up through the slot in the restraint shell to the top side of the restraint.*
 - f. *Continue to push retainer back through the slot in the cover.*
7. Remove belly pad and comfort pads, set aside.
8. Gently remove the upper portion of the cover. Be careful not to damage the energy absorbing foam.
9. Pull the lower harness straps, buckle tongues, chest clip, and buckle through the slots in the cover.
10. Remove cover from the restraint.



WARNING!

- Do not take apart or attempt to take apart the harness. It is unnecessary and dangerous to do so.
- Never remove the buckle tongues from the harness. They cannot be reattached after removal.

Refitting the Cover:

To refit the cover, reverse Cover Removal directions. Make sure that the harness is not twisted.

Cleaning the Cover

- HAND WASH, using cold water and mild soap.
- LINE DRY, to prevent cover from shrinking.
- **DO NOT:** Bleach, machine wash, machine dry, or iron.

Cleaning the Head Pad Cover

- REMOVE CONTENTS OF HEAD PAD, sponge clean with damp sponge and mild detergent.
- HAND WASH COVER ONLY, using cold water and mild soap.
- LINE DRY, to prevent cover from shrinking.
- **DO NOT:** Bleach, machine wash, machine dry, iron, or disassemble head pad insert.

Cleaning the Shell & Harness

- BRUSH AWAY LOOSE DEBRIS, using a soft bristled brush.
- SPONGE CLEAN, using warm water and mild soap.
- TOWEL DRY
- **DO NOT:** Use solvents, abrasive cleaners, or bleach. Do not machine wash, machine dry, or disassemble the harness.

Care and Maintenance

Cleaning the Harness Adjuster



WARNING! Periodically check the adjuster area to be sure it is clean and free of food, coins, dirt, and other objects. If debris is present, it must be removed to prevent interference with the adjuster mechanism.

- BRUSH AWAY LOOSE DEBRIS, using a soft bristled brush.
- SPONGE CLEAN, using warm water and mild soap.
- TOWEL DRY
- **DO NOT:** Use solvents, abrasive cleaners, or disassemble the harness.

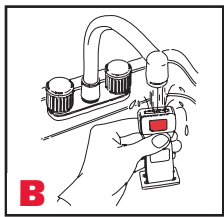
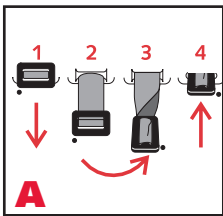
Buckle

Removal:

1. With restraint removed from the base, pull cover and foam back so that the buckle slots are visible.
2. Locate metal buckle strap retainer on the top side of the restraint.
3. Pull retainer up to loosen.
4. Turn the retainer so that the short side will go down through the slot in the restraint shell to the bottom side of the restraint.
5. From the bottom of the restraint, turn the retainer so the short side will go up through the slot in the restraint shell to the top side of the restraint.
6. Thread the retainer through the hole in cover and belly pad to remove buckle from restraint.
7. Continue to push retainer back through the slot in the cover.

Installation:

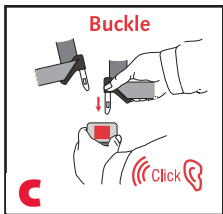
1. Locate the appropriate buckle slot.
2. Turn the retainer so that the short side will go down through the desired cover slot and the slot in the restraint shell to the bottom side of the restraint (Fig. A).
3. From the back side of the restraint, turn retainer so that the short side will go up through the other slot in the restraint shell (do not insert through cover) to the top side of the restraint.
4. Pull buckle away from restraint until tight, then verify that the strap is not twisted and the release button is facing outward.
5. Replace cover.



Cleaning the Buckle

If a child eats and drinks while in the restraint, the buckle may need to be periodically checked and cleaned of any accumulated debris or dried liquids.

- THOROUGHLY RINSE, using warm water (Fig. B).
- TEST THE BUCKLE, by fastening and unfastening until a positive click is heard after inserting the second buckle tongue (Fig. C). If a click is not heard, repeat cleaning procedure.
- TOWEL DRY
- **DO NOT:** Lubricate, use solvents, abrasive cleaners, soap or household detergents.



Warranty

This child restraint was manufactured by Britax Child Safety, Inc. ("Britax") warrants this product to the original retail purchaser as follows:

LIMITED ONE-YEAR WARRANTY

This product is warranted against defective materials or work-man-ship for one year from the date of original purchase. Proof of purchase is required. The exclusive remedy for this warranty is that Britax will, at its option, provide repair or replacement components for this product or refund the original purchase price of the product. Britax reserves the right to discontinue or change fabrics, parts, models or products, or to make substitutions.

To make a claim under this warranty, contact Britax Consumer Services at 1-888-427-4829 or write to us using the address on the back cover of this booklet. Proof of purchase is required.

PLEASE COMPLETE AND MAIL THE OWNER REGISTRATION CARD WITHIN (30) DAYS OF PURCHASE OR REGISTER ONLINE AT www.BritaxUSA.com/registration.

WARRANTY LIMITATIONS

This warranty does not include damages which arise from negligence, misuse or use not in accordance with the product instruction.

The use of non-Britax Child Safety, Inc. covers, inserts, toys, accessories, or tightening devices is not approved by Britax. Their use could cause this restraint to fail Federal Safety Standards or perform worse in a crash. Their use automatically voids the Britax warranty.

LIMITATION OF DAMAGES

The warranty and remedies as set forth above are exclusive and in lieu of all others, oral or written, express or implied. In no event will Britax, or the retailer selling this product, be liable for any damages, including incidental or consequential damages, arising out of the use or inability to use this product.

LIMITATIONS OF WARRANTIES AND OTHER WARRANTY TERMS AND STATE LAWS

Any implied warranties, including implied warranties of merchantability and fitness for a particular purpose, shall be limited to the duration and terms of the express written warranty. Some states do not allow limitations on how long an implied warranty lasts or the exclusion or limitation of incidental or consequential damages, so the above limitations may not apply. This warranty gives you specific legal rights, and you may have other rights, which vary from state to state. Neither Britax, nor the retailer selling this product, authorizes any person to create for it any other warranty, obligation, or liability in connection with this product.

Britax
Childcare



First class travel for children

Britax Child Safety, Inc.
13501 South Ridge Drive
Charlotte, NC 28273
USA

A **Britax Childcare** company

Tel: 704-409-1700

BritaxUSA.com